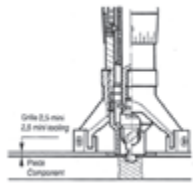


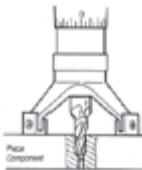
PRECISION MANUFACTURING

- Detachable spindle adapter provides alternative methods for use:
 - In combination with 3 jaw chuck.
 - Mounting direct onto machine spindle. This method provides increased level of concentricity, while reducing the length and weight of the drill/tool assembly. This results in better performance, improved machining and less fatigue on the operator.
- Cemented, hardened, and ground chrome-nickel steel spindle mounted on 3-needle-bearings and a thrust bearing.
- Microstop depth adjustment (1 scale division = 0.001 in).
- Microstop depth setting is held securely in place by locknut with seal. This patented feature allows an easy loosening of the locknut without damage to the drill cage.



DRILLING + COUNTERSINKING APPLICATION

- The mounting base is commonly used with strip templates. The tripod ensures maximum stability. Can be used with Cutter type RB 018 - see page 88.



REAMING + COUNTERSINKING APPLICATION

- In this example, the tripod is used with cutter RB 022 - see page 91. (Positioning of the cutter with pilot into the pilot hole).



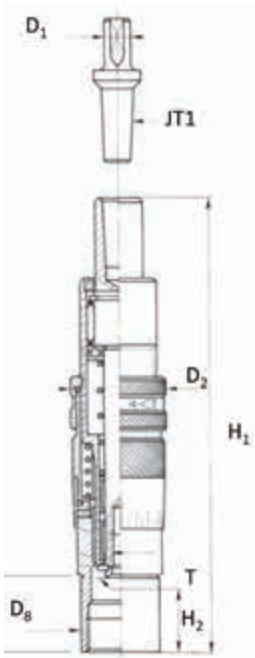
(Pictures are for illustration purposes only)

RB 356 HP 21 - LARGE		MICROSTOP CAGE ASSEMBLY CODE: LARGE WINDOW*					
		10040000PT	10040200W	10040210W	10040405W	10040505W	10040600W
RB 356 HPI 21 - LARGE		10040050	10040250W	10040260W	10040455W	10040555W	10040650W
RB 356 HPI 21 (Thread 3/8 - 24F)		10040700PT	10040720W	10040730W	10040740W	10040750W	10040760W
Basic Drill Cage + Adapter	RB 356 HP 21 RB 356 HPI 21	●	●	●	●	●	●
Mounting Base Flat Bearing Large Window	90815125W		●	●			
Threaded Mounting Base Large Window	90815135W				●		
Tripod + 3 nylon studs	90815165W			●		●	
Mounting Base Flat Bearing Large Window	90815070W						●
Nylon Nose Piece	90825175				●		

*Add CJ or CJW to the reference for Jacobs cone adapter.

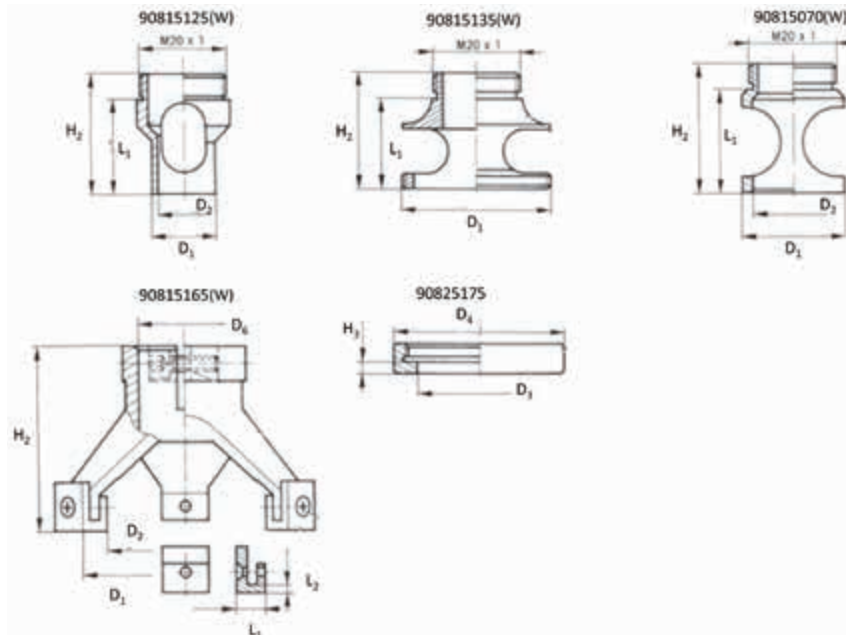
Microstop Cages for Hand Drilling Tools

RB 356 HP 21 | RBI 356 HPI 21 - Small Window



MICROSTOP CAGE										
	T		D1	D2	H1		H2		Stroke	D8
					Min	Max	Min	Max		
RB 356 HP 21	M6 x 1	mm	7	27	4	24	116	136	21	22
RB 356 HPI 21	1/4 in - 28	in	0.28	1.06	0.16	0.94	4.57	5.35	0.83	0.87

MOUNTING BASE								
		D1	D2	L1	L2	H2	R1	D6
90815125(W)	mm	14.5	12.5	22	NA	26	NA	NA
	in	0.57	0.49	0.87	NA	1.02	NA	NA
90815135(W)	mm	NA	NA	21	NA	27	NA	NA
	in	NA	NA	0.83	NA	1.06	NA	NA
90815070(W)	mm	24	19	24	NA	30	NA	NA
	in	0.94	0.75	0.94	NA	1.18	NA	NA
90815165(W)	mm	64	51	6.5	2	42	NA	22
	in	2.52	2.01	0.26	NA	1.65	NA	0.87



Dimensions for large and small window

NOSE PIECE					
		D3	D4	H3	D7
90825175	mm	29	40	3	NA
	in	1.14	1.57	0.12	NA

RB 356 HP 21 - SMALL		MICROSTOP CAGE ASSEMBLY CODE: SMALL WINDOW*					
		1004000PT	10040200PT	10040210	10040405	10040505	10040600PT
RB 356 HPI 21 - SMALL		10040050	10040250	10040260	10040455	10040555	10040650
RB 356 HPI 21 (Thread 3/8 - 24F)		10040700PT	10040720	10040730	10040740	10040750	10040760
Basic Drill Cage + Adapter	RB 356 HP 21 RB 356 HPI 21	●	●	●	●	●	●
Mounting Base Flat Bearing	90815125		●	●			
Threaded Mounting Base	90815135				●		
Tripod + 3 Nylon studs	90815165			●		●	
Mounting Base Flat Bearing	90815070						●
Nylon Nose Piece	90825175				●		

*Add CJ or CJW to the reference for Jacobs cone adapter.